

MINISTRY OF HIGHER AND TERTIARY EDUCATION,
INNOVATION, SCIENCE AND TECHNOLOGY DEVELOPMENT

THE PACESETTER

P.O Box 640, Mutare Cnr Josiah Tongogara /Vintcent Ave
Tel: +263 2020 63141 / 63153

Email: principal@mutarepolytechnic.ac.zw
www.mutarepolytechnic.ac.zw

BACKGROUND

Mutare Polytechnic was established as Umtali Technical Institute in 1948 as a Satellite College of the then Salisbury Technical College (now Harare Polytechnic). At its inception, the institution was offering elementary courses in Secretarial and Commercial Studies. It also offered facilities for part-time and full time 'O' Level and A-Level Business Studies as well as a center of Institute of Marketing Management (IMM). In 1984 it was upgraded to an independent technical institution under the auspices of the Ministry of Manpower Planning and Development. Construction of the present site began the same year and the first crop of engineering trainees was recruited. The present site was officially opened in September 1989.

The institution now constitutes six academic divisions namely Applied Arts and Science, Civil and Construction, Commerce, Information Management Systems, Research, Education and Enterprise Development and Engineering which offer a wide variety of courses. There is a steady progression from National Certificate through to the B-Tech degree with two degree programmes currently on offer.

In line with the Institution's Vision: Heritage Based Empowered Human Capital for industrialization and modernization by 2030 as well as its Mission to develop Skilled human capital through heritage based Education 5.0 for quality goods and services.

The institution has set aside infrastructure for Study in Zimbabwe specifically for international students

STUDENTS' HALLS OF RESIDENCE



APPLIED ARTS AND SCIENCES DIVISION

APPLIED ARTS DEPARTMENT

COURSE	LEVEL	DURATION	ENTRY QUALIFICATIONS
Applied Art & Design	National Certificate	1 Year	5 'O'Levels including English language
	National Diploma	2 Years plus 1 year Industrial attachment	5 'O'Levels including English language plus National Certificate in Applied Art & Design
	Higher National Diploma	1 Year	5 'O'Levels including English language plus National Diploma in Applied Art & Design
Cosmetology	National Certificate	1 Year	5 'O'Levels including English language
	National Diploma	2 Years plus 1 year Industrial attachment	5 'O'Levels including English language plus National Certificate in Cosmetology
	Higher National Diploma	1 Year	5 'O'Levels including English language plus National Diploma in Cosmetology
Fashion, Clothing & Textiles	National Certificate	1 Year	5 'O'Levels including English language
	National Diploma	2 Years plus 1 year Industrial attachment	5 'O'Levels including English language plus National Certificate in Fashion, Clothing & Textiles
	Higher National Diploma	1 Year	5 'O'Levels including English language plus National Diploma in Fashion, Clothing & Textiles
Industrial Clothing Design & Construction	National Certificate	1 Year	5 'O'Levels including English language
	National Diploma	2 Years plus 1 year Industrial attachment	5 'O'Levels including English language plus National Certificate in Industrial Clothing Design & Construction
	Higher National Diploma	1 Year	5 'O'Levels including English language plus National Diploma in Industrial Clothing Design & Construction
Music	National Certificate	1 Year	5 'O'Levels including English language



Fashion & Clothing Design Studies



Arts and Culture



Applied Sciences Studies



Hospitality & Tourism Studies



Arts and Culture



Fashion Design Students on Industrial Tour



Animal Husbandry

APPLIED ARTS AND SCIENCES DIVISION

APPLIED SCIENCES DEPARTMENT

COURSE	LEVEL	DURATION	
Horticulture	National Certificate	1 Year plus 1 year industrial attachment	5 'O'Levels including English language, Science & Mathematics
	National Diploma	2 Years plus 1 year Industrial attachment	5 'O'Levels including English language, Science & Mathematics plus National Certificate in Horticulture
	Higher National Diploma	1 Year	5 'O'Levels including English language, Science & Mathematics plus National Certificate in Horticulture
Science Technology	National Certificate	1 Year	5 'O'Levels including English language, Science & Mathematics

HOSPITALITY AND TOURISM DEPARTMENT

COURSE	LEVEL	DURATION	ENTRY QUALIFICATIONS
Baking Technology & Management	National Certificate	1 Year	5 'O'Levels including English language
	National Diploma	2 Years plus 1 year Industrial attachment	5 'O'Levels including English language plus National Certificate in Baking Technology and Management
	Higher National Diploma	1 Year	5 'O'Levels including English language plus National Diploma in Baking Technology and Management
Food and Beverage Management	National Certificate	1 Year	5 'O'Levels including English language
	National Diploma	2 Years plus 1 year Industrial attachment	5 'O'Levels including English language plus National Certificate in Food and Beverage Management
	Higher National Diploma	1 Year	5 'O'Levels including English language plus National Diploma in Food and Beverage Management
Professional Cookery	National Certificate	1 Year	5 'O'Levels including English language
	National Diploma	2 Years plus 1 year Industrial attachment	5 'O'Levels including English language plus National Certificate in Professional Cookery
	Higher National Diploma	1 Year	5 'O'Levels including English language plus National Diploma in Professional Cookery
Hospitality and Tourism Management	National Certificate	1 Year	5 'O'Levels including English language
	National Diploma	2 Years plus 1 year Industrial attachment	5 'O'Levels including English language plus National Certificate in Hospitality and Tourism Management
	Higher National Diploma	1 Year	5 'O'Levels including English language plus National Diploma in Hospitality and Tourism Management

CIVIL AND CONSTRUCTION ENGINEERING DIVISION

CONSTRUCTION ENGINEERING DEPARTMENT

COURSE	LEVEL	DURATION	ENTRY QUALIFICATIONS
Building Technology	National Certificate	1 Year plus 1 year industrial attachment	5 'O'Levels including English language, Science & Mathematics
	National Diploma	2 Years plus 6 months Industrial attachment	5 'O'Levels including English language, Science & Mathematics plus National Certificate in Building Technology/ Brick and Block laying
	Higher National Diploma	1 Year 6 months	5 'O'Levels including English language, Science & Mathematics plus National Diploma in Building Technology
Carpentry & Joinery Technology	National Certificate	1 Year plus 1 year industrial attachment	5 'O'Levels including English language, Science & Mathematics
	National Diploma	2 Years plus 6 months Industrial attachment	5 'O'Levels including English language, Science & Mathematics plus National Certificate in Carpentry & Joinery Technology
	Higher National Diploma	1 Year 6 months	5 'O'Levels including English language, Science & Mathematics plus National Diploma in Carpentry & Joinery Technology
Painting & Decorating Technology	National Certificate	1 Year plus 1 year industrial attachment	5 'O'Levels including English language, Science & Mathematics
	National Diploma	2 Years plus 6 months Industrial attachment	5 'O'Levels including English language, Science & Mathematics plus National Certificate in Painting & Decorating Technology
	Higher National Diploma	1 Year 6 months	5 'O'Levels including English language, Science & Mathematics plus National Certificate in Painting & Decorating Technology
Plumbing & Drain Laying	National Certificate	1 Year plus 1 year industrial attachment	5 'O'Levels including English language, Science & Mathematics
	National Diploma	2 Years	5 'O'Levels including English language, Science & Mathematics plus National Certificate in Plumbing & Drain Laying
	Higher National Diploma	1 Year 6 months	5 'O'Levels including English language, Science & Mathematics plus National Diploma in Plumbing & Drain Laying





Construction of a Bio-gas plant on Campus



Wood Technology Students in Workshop

CIVIL AND CONSTRUCTION ENGINEERING DIVISION

WOOD ENGINEERING DEPARTMENT

COURSE	LEVEL	DURATION	ENTRY QUALIFICATIONS
Wood Technology (Machining & Manufacturing)	National Certificate	1 Year plus 1 year industrial attachment	5 'O'Levels including English language, Science & Mathematics
	National Diploma	2 Years 6 months	5 'O'Levels including English language, Science & Mathematics plus National Certificate in Wood Technology
	Higher National Diploma	1 Year 3 Months	5 'O'Levels including English language, Science & Mathematics plus National Diploma in Wood Technology

Civil Engineering	National Certificate	1 Year	5 'O'Levels including English language, Science & Mathematics
	National Diploma	2 Years plus 1 year Industrial attachment	5 'O'Levels including English language, Science & Mathematics plus National Certificate in Civil Engineering
	Higher National Diploma	1 Year plus 1 year industrial attachment	5 'O'Levels including English language, Science & Mathematics plus National Diploma in Civil Engineering

Quantity Surveying	National Certificate	1 Year plus 1 year industrial attachment	5 'O'Levels including English language, Science & Mathematics
	National Diploma	2 Years plus 1 year Industrial attachment	5 'O'Levels including English language, Science & Mathematics plus National Certificate in Quantity Surveying
	Higher National Diploma	1 Year plus 1 year industrial attachment	5 'O'Levels including English language, Science & Mathematics plus National Diploma in Quantity Surveying

Water Resources & Irrigation Engineering	National Certificate	1 Year	5 'O'Levels including English language, Science & Mathematics
	National Diploma	2 Years plus 1 year Industrial attachment	5 'O'Levels including English language, Science & Mathematics plus National Certificate in Water Resources and Irrigation Engineering
	Higher National Diploma	1 Year plus 1 year industrial attachment	5 'O'Levels including English language, Science & Mathematics plus National Diploma in Water Resources and Irrigation Engineering

COMMERCE LECTURE ROOMS



COMMERCE DIVISION

BUSINESS STUDIES DEPARTMENT

COURSE	LEVEL	DURATION	ENTRY QUALIFICATIONS
Accountancy	National Certificate	1 Year	5 'O'Levels including English language and Mathematics
	National Diploma	2 Years plus one year Industrial attachment	5 'O'Levels including English language and Mathematics plus National Certificate in Accountancy
	Higher National Diploma	1 Year	5 'O'Levels including English language and Mathematics plus National Diploma in Accountancy
Banking & Finance	National Certificate	1 Year	5 'O'Levels including English language and Mathematics
	National Diploma	2 Years plus 1 year Industrial attachment	5 'O'Levels including English language and Mathematics plus National Certificate in Banking & Finance
	Higher National Diploma	1 Year	5 'O'Levels including English language and Mathematics plus National Diploma in Banking & Finance

MANAGEMENT STUDIES DEPARTMENT

Human Resources Management	National Certificate	1 Year	5 'O'Levels including English language
	National Diploma	2 Years plus 1 year Industrial attachment	5 'O'Levels including English language plus National Certificate in Human Resources Management
	Higher National Diploma	1 Year	5 'O'Levels including English language plus National in Diploma Human Resources Management
Sales & Marketing Management	National Certificate	1 Year	5 'O'Levels including English language
	National Diploma	2 Years plus 1 year Industrial attachment	5 'O'Levels including English language plus National Certificate in Sales & Marketing Management
	Higher National Diploma	1 Year	5 'O'Levels including English language plus National Diploma in Sales & Marketing Management



Marketing Students making a presentation



FOCUS Peer group

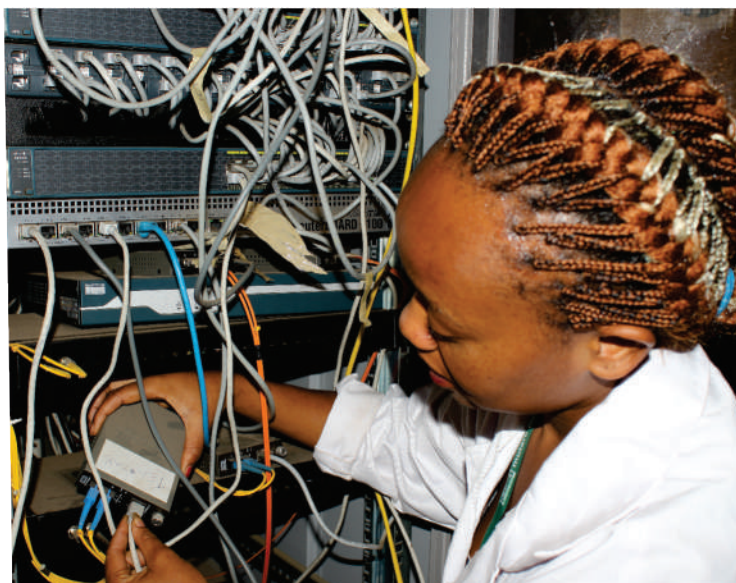
COMMERCE DIVISION

COURSE	LEVEL	DURATION	ENTRY QUALIFICATIONS
Purchasing & Supply Management	National Certificate	1 Year	5 'O'Levels including English language
	National Diploma	2 Years plus 1 year industrial attachment	5 'O'Levels including English language plus National Certificate in Purchasing & Supply Management
	Higher National Diploma	1 Year	5 'O'Levels including English language plus National Diploma in Purchasing & Supply Management
Transport & Logistics Management	National Certificate	1 Year	5 'O'Levels including English language
	National Diploma	2 Years plus 1 year Industrial attachment	5 'O'Levels including English language plus National Certificate in Transport & Logistics Management
	Higher National Diploma	1 Year	5 'O'Levels including English language plus National Diploma in Transport & Logistics Management
Office Management	National Certificate	1 Year	5 'O'Levels including English language
	National Diploma	2 Years plus 1 year Industrial attachment	5 'O'Levels including English language plus National Certificate in Office Management
	Higher National Diploma	1 Year	5 'O'Levels including English language plus National Diploma in Office Management



INFORMATION MANAGEMENT DIVISION

COURSE	LEVEL	DURATION	ENTRY QUALIFICATIONS
Information & Communication Technology	National Certificate	1 Year	5 'O'Levels including English language & Mathematics
	National Diploma	2 Years plus 1 year industrial attachment	5 'O'Levels including English language & Mathematics plus Certificate in Information & Communication Technology
	Higher National Diploma	1 Year	5 'O'Levels including English language & Mathematics plus Diploma in Information & Communication Technology
Library & Information Science	National Certificate	1 Year	5 'O'Levels including English language
	National Diploma	2 Years plus 1 year Industrial attachment	5 'O'Levels including English language plus National Certificate in Library & Information Science
	Higher National Diploma	1 Year	5 'O'Levels including English language plus National Diploma in Library & Information Science
Records & Information Management	National Certificate	1 Year	5 'O'Levels including English language
	National Diploma	2 Years plus 1 year Industrial attachment	5 'O'Levels including English language plus National Certificate in Records & Information Management
	Higher National Diploma	1 Year	5 'O'Levels including English language plus National Diploma in Records & Information Management



ENGINEERING DIVISION

AUTOMOTIVE DEPARTMENT

COURSE	LEVEL	DURATION	ENTRY QUALIFICATIONS
Automobile Electrics & Electronics	National Certificate	1 Year plus 1 year industrial attachment	5 'O'Levels including English language, Science and Mathematics
	National Diploma	2 Years	5 'O'Levels including English language, Science and Mathematics plus National certificate in Automobile Electrics and Electronics
Automotive Precision Machining	National Certificate	1 Year plus 1 year industrial attachment	5 'O'Levels including English language, Science and Mathematics
Diesel Plant Fitting	National Certificate	1 Year plus 1 year industrial attachment	5 'O'Levels including English language, Science and Mathematics
	National Diploma	2 Years	5 'O'Levels including English language, Science and Mathematics plus National Certificate in Diesel Plant Fitting
Motor vehicle Mechanics	National Certificate	1 Year plus 1 year industrial attachment	5 'O'Levels including English language, Science and Mathematics
Motor Vehicle Body Repairs	National Certificate	1 Year plus 1 year industrial attachment	5 'O'Levels including English language, Science and Mathematics



Automotive Engineering Students in Workshops

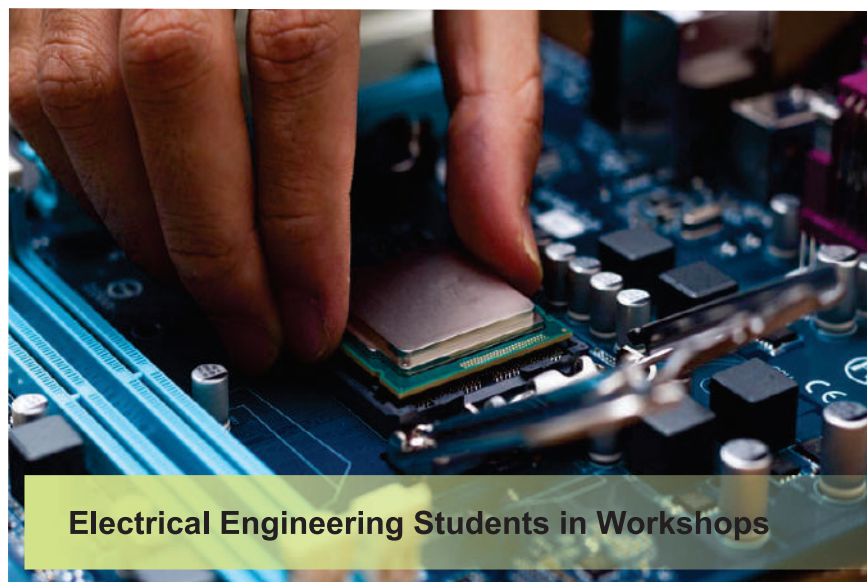


Electrical Engineering Students in Workshops

ENGINEERING DIVISION

ELECTRICAL ENGINEERING DEPARTMENT

COURSE	LEVEL	DURATION	ENTRY QUALIFICATIONS
Communication Systems	National Certificate	1 Year plus 1 year industrial attachment	5 'O'Levels including English language, Science and Mathematics
	National Diploma	2 Years	5 'O'Levels including English language, Science and Mathematics plus National certificate in Communication Systems
Computer Systems	National Certificate	1 Year plus 1 year industrial attachment	5 'O'Levels including English language, Science and Mathematics
	National Diploma	2 Years	5 'O'Levels including English language, Science and Mathematics plus National Certificate in Computer Systems
Electrical Power Engineering	National Certificate	1 Year plus 1 year industrial attachment	5 'O'Levels including English language, Science and Mathematics
	National Diploma	2 Years	5 'O'Levels including English language, Science and Mathematics plus National Certificate In Electrical Power Engineering
	Higher National Diploma	1 Year	5 'O'Levels including English language, Science and Mathematics plus National Diploma In Electrical Power Engineering
Instrumentation and Control Systems	National Certificate	1 Year plus 1 year industrial attachment	5 'O'Levels including English language, Science and Mathematics



Electrical Engineering Students in Workshops

ENGINEERING DIVISION

MECHANICAL ENGINEERING DEPARTMENT

COURSE	LEVEL	DURATION	ENTRY QUALIFICATIONS
Fabrication Engineering	National Certificate	1 Year plus 1 year industrial attachment	5 'O'Levels including English language, Science and Mathematics
Machine Shop Engineering	National Certificate	1 Year plus 1 year industrial attachment	5 'O'Levels including English language, Science and Mathematics
Plant Engineering	National Diploma	2 Years plus 6 Months industrial attachment	5 'O'Levels including English language, Science and Mathematics plus National Certificate in any Mechanical Engineering Courses
Mechanical Engineering	Higher National Diploma	1 Year	5 'O'Levels including English language, Science and Mathematics plus National Diploma in any Mechanical Engineering Courses
Production Engineering	National Diploma	2 Years plus 6 Months industrial attachment	5 'O'Levels including English language, Science and Mathematics plus National Certificate in any Mechanical Engineering Courses
Refrigeration & Air Conditioning	National Certificate	1 Year plus 1 year industrial attachment	5 'O'Levels including English language, Science and Mathematics



Mechanical Engineering Students in Workshops

RESEARCH EDUCATION AND ENTERPRISE DEVELOPMENT (REED) DIVISION

COURSE	LEVEL	DURATION	ENTRY QUALIFICATIONS
Further Education Trainers Diploma	National Diploma	2 Years	5 'O'Levels including English language and any certificate or diploma

BACHELOR OF TECHNOLOGY HONOURS DEGREES

PROGRAMMES	DURATION AND MODE OF STUDY
B-Tech Hons in Wood Technology	4 Semesters Block Release Semesters 1 & 2 In College 3 & 4 Industrial Attachment & Project
B-Tech Hons in Construction Engineering	4 Semesters Block Release Semesters 1 & 2 In College 3 & 4 Industrial Attachment & Project

Entry Qualifications

5 'O'Leveels Including English Language & Mathematics
HND Construction Technology / HND Wood Technology (HEXCO)
HND in any related Civil, Quantity Survey, Architecture Journeyman Class1 certificate

AWARDING CRITERIA

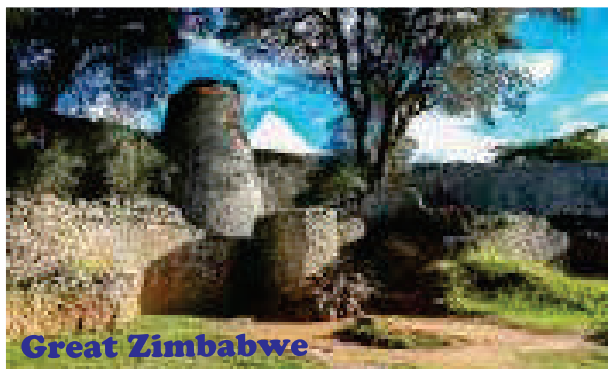
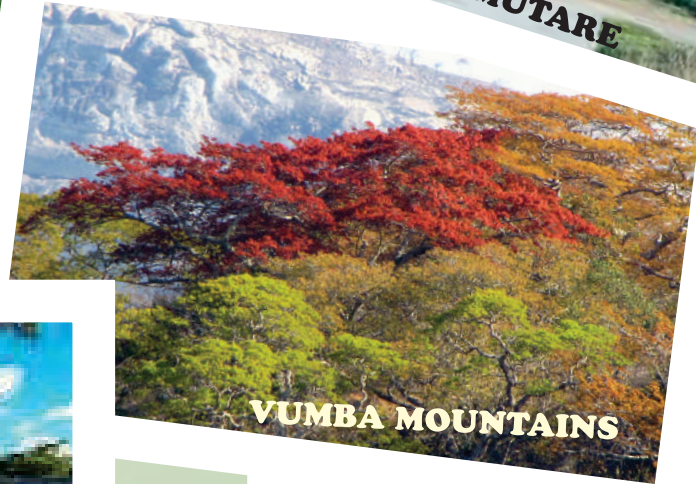
For a student to be awarded in all courses, he or she should pass all subjects / modules at that level

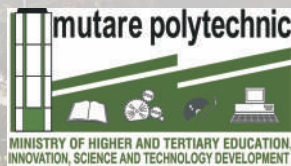
MODE OF STUDY

Courses are offered on Full-time, Part-time, Block release, Open distance learning or part qualification on single modular basis, offered on semesterisation.

NB
PROSPECTIVE STUDENTS WHO ARE FROM NON-ENGLISH SPEAKING COUNTRIES ARE REQUIRED TO UNDERGO AN ENGLISH LANGUAGE TRAINING COURSE.

PLACES TO VISIT





THE PACESETTER

P.O Box 640, Mutare Cnr Josiah Tongogara /Vintcent Ave
Tel: +263 2020 63141 / 63153

Email: principal@mutarepolytechnic.ac.zw
www.mutarepolytechnic.ac.zw